

The logo for Basis, featuring the word "Basis" in a white, sans-serif font on a dark blue background.

Pac-Rim Opportunity Fund

Non-US Feeder Fund (Class A and B Share Class)

Market review

March 2009

The Asian High Yield market followed global trends and continued its first quarter rally. The strategy remains to sell the portfolio, helping to facilitate additional returns of capital to Investors.

Despite market price improvements in loans, the default rates experienced by CLOs are according to bank research at about 4.5%, well beneath market-wide index default rates, but the rising tide of ratings downgrades to CCC acts as a further default rate mechanism turning off cashflows to lower tranches of CLOs. Meanwhile reduced cashflows are being received and most likely will ultimately shut down on the line items within the portfolio, having harvested as much cashflow as possible and exhausting the value of these securities.

Basis Pac-Rim *	Mar 09	12 Month Return
USD Class A	-6.71%	-42.94%
EUR Class A	-6.42%	-43.07%
JPY Class A	-6.73%	-42.43%
AUD Class A	-6.01%	-42.43%
USD Class B	-6.63%	-42.34%

Basis Capital Funds Management Limited

ACN 092 478 441 AFSL 230576

<http://www.basiscap.com.au>

Disclaimer: The information contained in this newsletter is for information purposes only and is not to be relied on as a recommendation or forecast by the investment manager, investment advisor or any related party. * Past performance is not necessarily indicative of future performance. The investment manager, investment advisor and its affiliates assume no liability for any inaccurate, delayed or incomplete information, nor for any actions taken in reliance thereon. Under no circumstances will the investment manager, investment advisor and its affiliates be liable for any loss including, but not limited to direct, indirect, incidental, special or consequential damages caused by using the information. Nothing in this newsletter should be construed as either an offer to sell or a solicitation of an offer to buy or sell any investments in any jurisdiction. Fund risks are outlined in the current Confidential Information Memorandum.

Basis Pac-Rim Opportunity Fund

USD Class A

Monthly Return *

	Jan	Feb	Mar	Apr	May	Jun	Jul	Aug	Sep	Oct	Nov	Dec	YTD%
2009	-3.42	-0.55	-6.71										-10.39
2008	-7.51	-3.27	-2.50	1.00	1.11	0.21	-1.16	-1.69	-9.84	-10.92	-4.77	-16.28	-44.46
2007	0.49	-0.74	0.83	1.28	0.90	-13.93	-34.72	-4.91	1.90	-6.91	-3.00	-1.80	-50.38
2006	1.32	1.10	2.13	1.76	0.29	0.44	0.75	1.33	0.47	0.59	0.62	1.59	13.08
2005	1.05	2.09	0.02	0.44	0.68	0.58	1.67	0.69	1.81	1.04	0.65	0.79	12.09
2004	0.39	0.79	0.37	0.25	-1.74	0.01	0.48	0.73	0.49	0.25	1.09	0.54	3.69
2003	0.82	1.33	0.38	0.73	0.57	0.49	-0.78	0.25	0.87	0.55	0.25	0.56	6.18
2002	2.13	1.89	1.26	1.78	0.42	0.41	0.20	0.13	0.10	0.65	1.05	0.98	11.53
2001	2.03	1.52	1.25	0.54	1.56	1.19	0.21	1.76	-0.87	1.35	1.42	1.98	14.83
2000								0.58	-1.02	-1.43	-0.05	1.54	-0.41

Structure

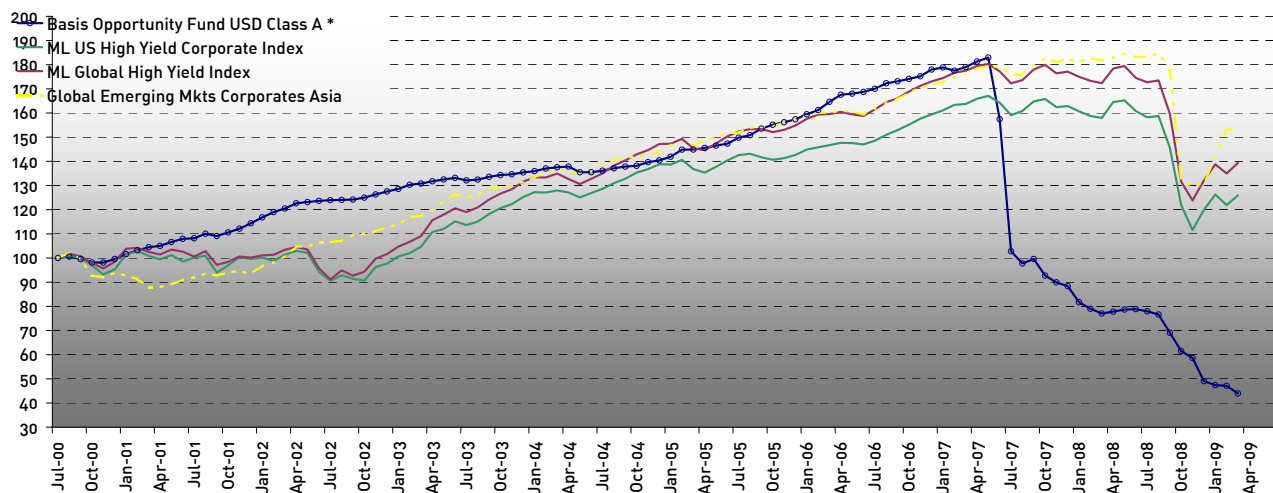
Minimum Investment	USD 55,000
Minimum Redemption	USD 55,000
Investment Manager	Pac-Rim Investments Limited (Cayman Islands)
Investment Advisor	Basis Capital Funds Management Limited
Management Fee	2%
Performance Fee	20% High Water Mark
Redemption Fee	0.5% fixed, additional 1.5% if withdrawn within 1 year of issue of shares, plus 2% for monthly liquidity
Subscriptions	Monthly
Redemptions	Quarterly (90 days notice)
Custodian	Fortis Prime Fund Solutions Bank (Ireland) Ltd
Administrator	Fortis Prime Fund Solutions (Cayman) Ltd
Auditor	Ernst & Young
Legal Advisor	Walkers
Reporting	Monthly by Investment Advisor

Performance Statistics - March - 2009

NAV/Unit March 2009	354.73	Highest 12 Month Return	16.78%
Return Since Inception	-56.04%	Lowest 12 Month Return	-57.09%
Avg. Ann. Compound Return	-9.05%	Highest Monthly Return	2.13%
Volatility Since Inception	4.60%	Lowest Monthly Return	-34.72%
Annualised Volatility	15.92%	Average Gain	0.91%
Sharpe Ratio (RF = 3.90%)	-0.81	Average Loss	-5.62%
% Positive Months	75.96%	3 Month Return	-10.39%
Worst Drawdown	-46.57%	6 Month Return	-36.36%
Recovery (Months)	N/A	12 Month Return	-42.94%
Longest Losing Streak	6		

Description

A USD-denominated Shares Class, offering investors access to diversified portfolio of relative value and arbitrage opportunities in international markets. The manager employs a multi-strategy and multi-geographical approach to investments, largely in the credit space.



As at March 2009	Avg Monthly Return	Cum Return	Volatility of Returns	Sharpe Ratio	Correl to USD Class A
Basis Pac-Rim USD Class A *	-0.7%	-56.0%	15.9%	-0.81	1.00
ML US High Yield Corporate Index	0.3%	67.1%	10.9%	0.2	0.27
ML Global High Yield Index	0.4%	80.3%	10.5%	0.3	0.29
Global Emerging Mkts Coporates Asia	0.5%	84.7%	11.0%	0.3	0.30

* Past Performance is not necessarily indicative of future performance.



Disclaimer

Please note that the NAV provided herein by Basis Pac Rim (Feeder) (the "Feeder") is provided on the following basis:

(i) The Basis Yield Alpha (Master) Fund (the 'Master Fund') is now in official liquidation with three partners of Grant Thornton acting as the joint official liquidators (the "JOL's"). The JOL's have not, at this time, approved the values and data received to date from the Master Fund used to calculate the NAV.

*(ii) The valuation of the assets of the Feeder by the Feeder and the Investment Manager are as at **31 March 2009**. In light of the subsequent developments in the credit markets, the prices realised for such assets may now be lower. The Feeder in compiling and collating the prices in relation to the positions has not performed any independent verification of these prices against third party sources or otherwise;*

Consequent to the above, the NAV provided herein does not constitute any warranty, or undertaking of any form nor does the Feeder, Investment Manager or Investment Advisor assume any liability whether contractual tortuous or otherwise for any reliance which any recipient may place on the NAV.